

Upper Moreland Township Parks & Recreation Committee Project Update

Monday, May 5, 2025 | Final Plan

Woodlawn Park

Construction Documents

Upper Moreland Township

Parks & Recreation Project Update Meeting: 05.12.2025

GILMORE ASSOCIATES | SIMONE COLLINS

1

Master Plan Process



Transparent Public Outreach Process:

- 4 Public Meetings - 139
- 6 Study Committee Meetings
- 4 Focus Group Meetings – 55
- 8 Key Person Interviews - 8
- Web-based Public Opinion Survey - 511
- 30-Day Review Period - 6

**Master Plan
Total Public
Interactions: 719**

Program Elements

- ADA Walking Trails
- Park Office / Restrooms
- Picnic Pavilions
- Playground area
- Small Plaza / Seating Areas
- Open Play Lawn
- Multiuse Courts
- 70' Baseball Field
- Preserve Heritage trees
- New Tree Plantings
- Stylized Native Meadow Plantings
- Lighting & Cameras
- Parking



LEGEND

VEHICULAR ASPHALT

ASPHALT WALKWAYS

ASPHALT COURT WITH SPORT SURFACE COATING

COLOR CONCRETE

CONCRETE PAVEMENT

POROUS PLAY SAFETY SURFACE

TURF

SOD

LANDSCAPE BED

MEADOW

RAIN GARDEN

PROPOSED CANOPY TREE

PROPOSED UNDERSTORY TREE

PROPOSED EVERGREEN TREE

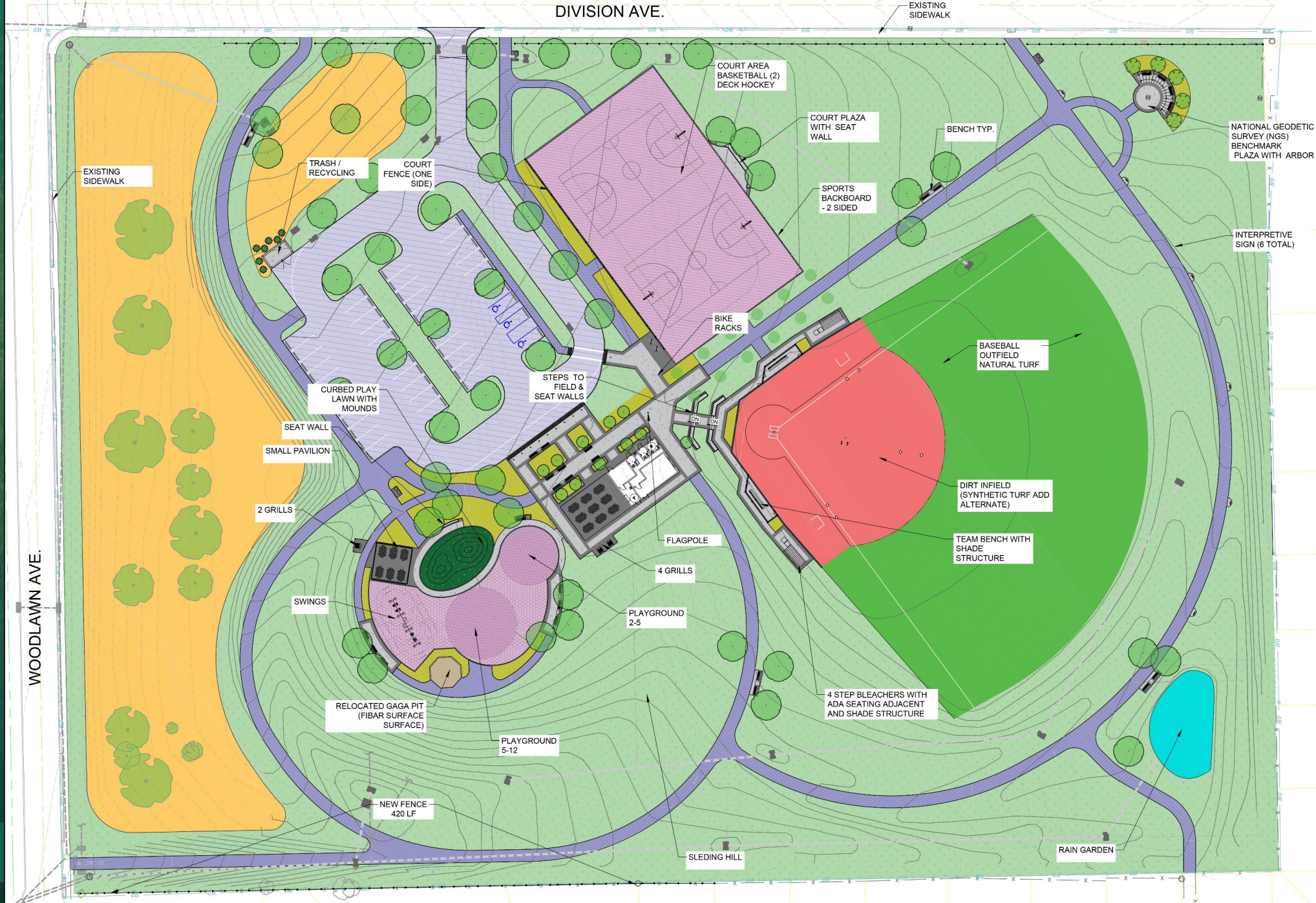
FENCE

ORIENTATION

DRAWING SCALE

NORTH

0'30'60'



LEGEND

VEHICULAR ASPHALT

ASPHALT WALKWAYS

ASPHALT COURT WITH SPORT SURFACE COATING

COLOR CONCRETE

CONCRETE PAVEMENT

POROUS PLAY SAFETY SURFACE

TURF

SOD

LANDSCAPE BED

MEADOW

RAIN GARDEN

PROPOSED CANOPY TREE

PROPOSED UNDERSTORY TREE

PROPOSED EVERGREEN TREE

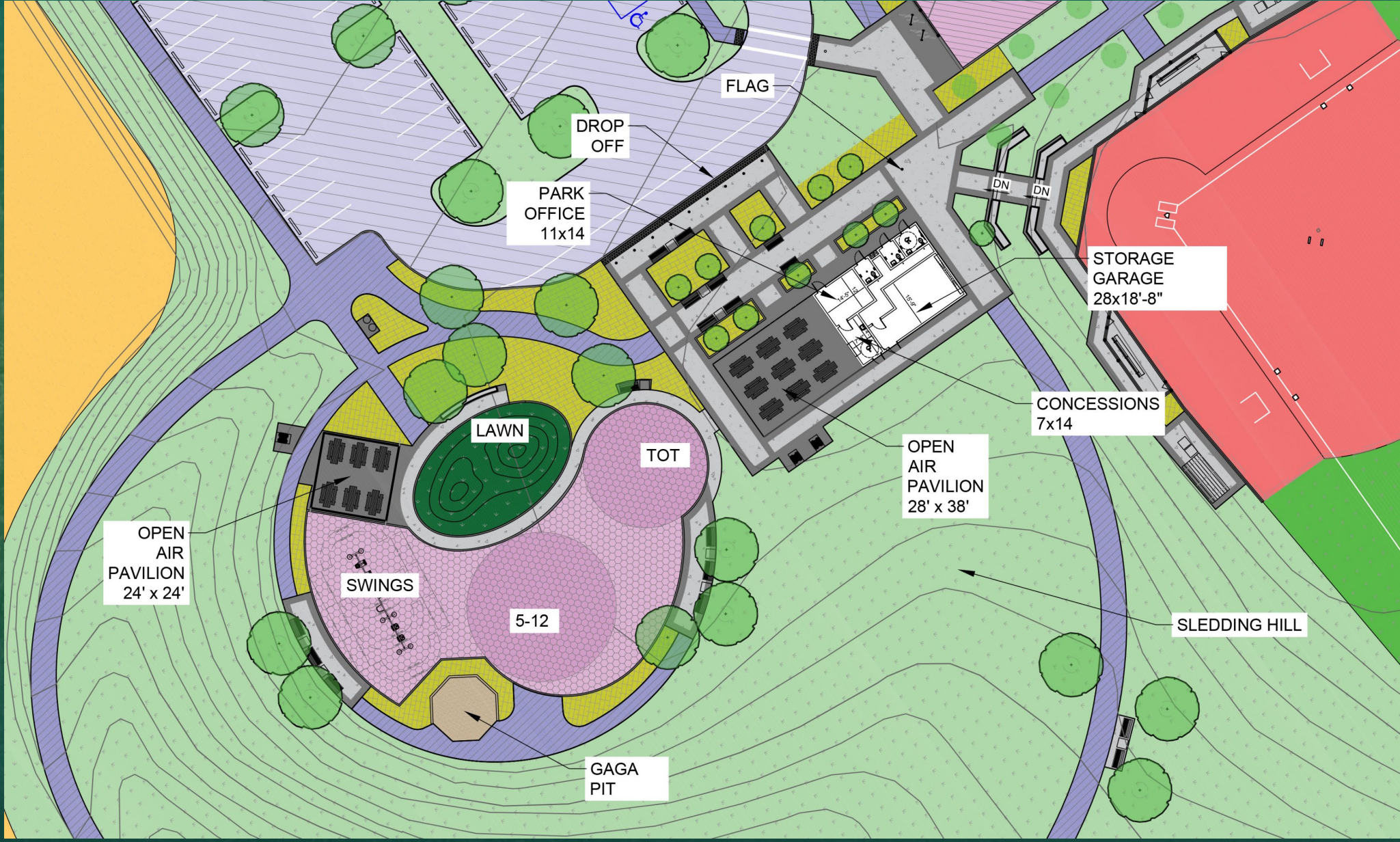
FENCE

NORTH

0'

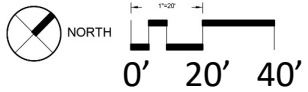
30'

60'



LEGEND

- | | |
|--|--|
|  | VEHICULAR ASPHALT |
|  | ASPHALT WALKWAYS |
|  | ASPHALT COURT WITH SPORT SURFACE COATING |
|  | COLOR CONCRETE |
|  | CONCRETE PAVEMENT |
|  | POROUS PLAY SAFETY SURFACE |
|  | TURF |
|  | SOD |
|  | LANDSCAPE BED |
|  | MEADOW |
|  | RAIN GARDEN |
|  | PROPOSED CANOPY TREE |
|  | PROPOSED UNDERSTORY TREE |
|  | PROPOSED EVERGREEN TREE |
|  | FENCE |

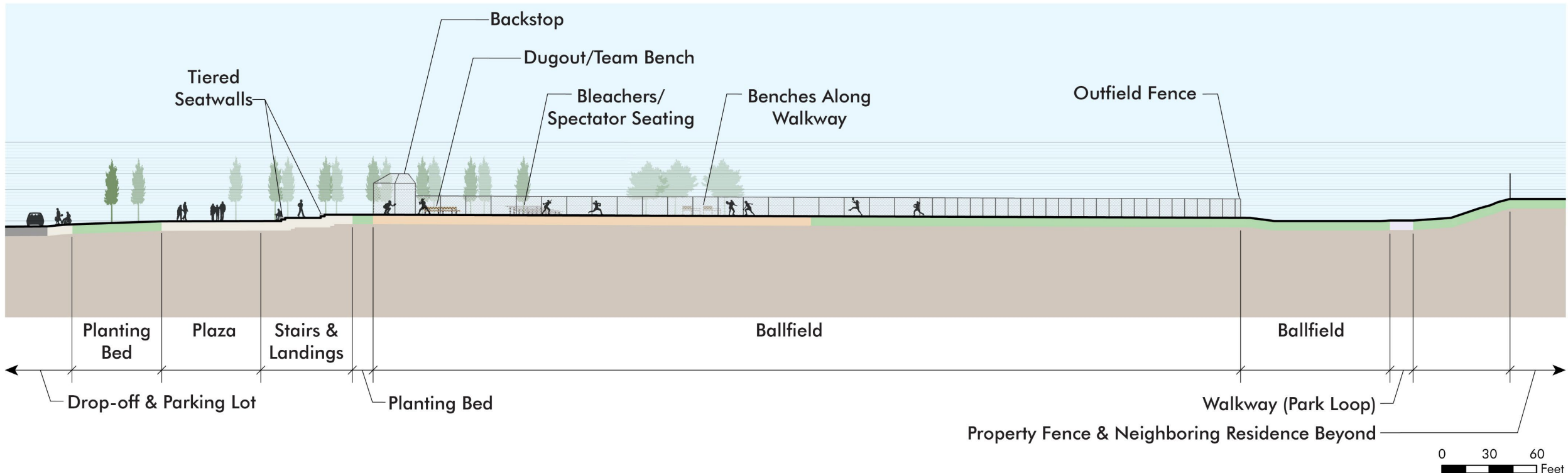
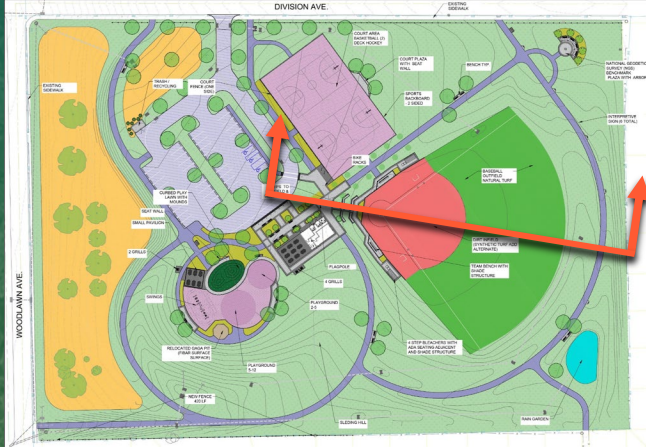
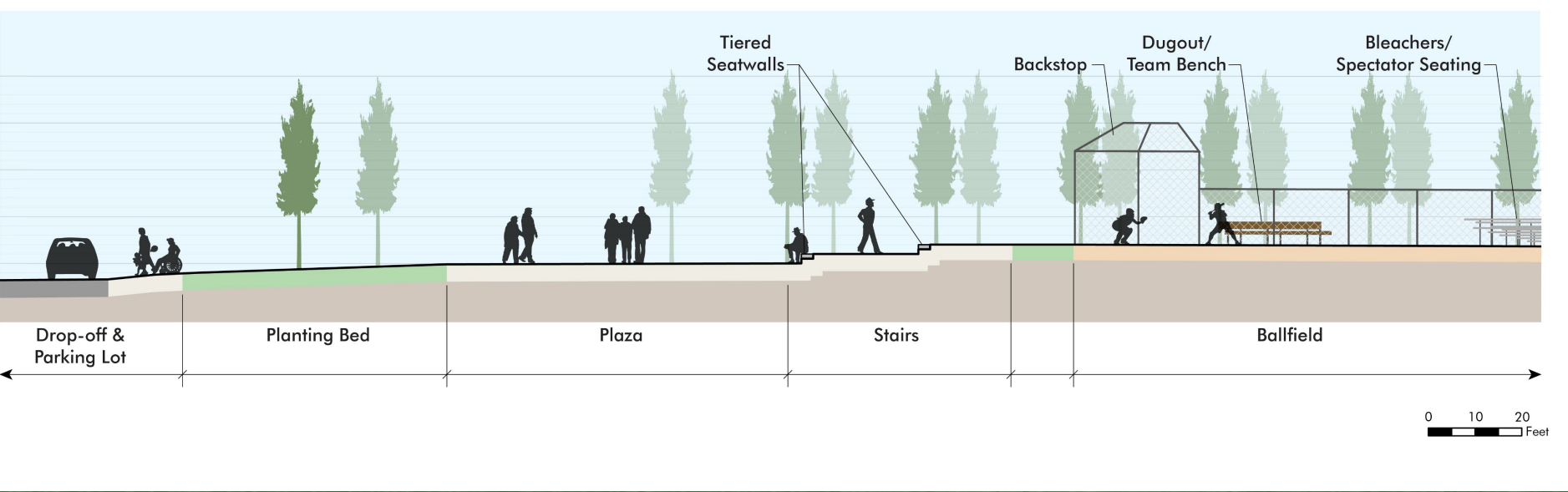


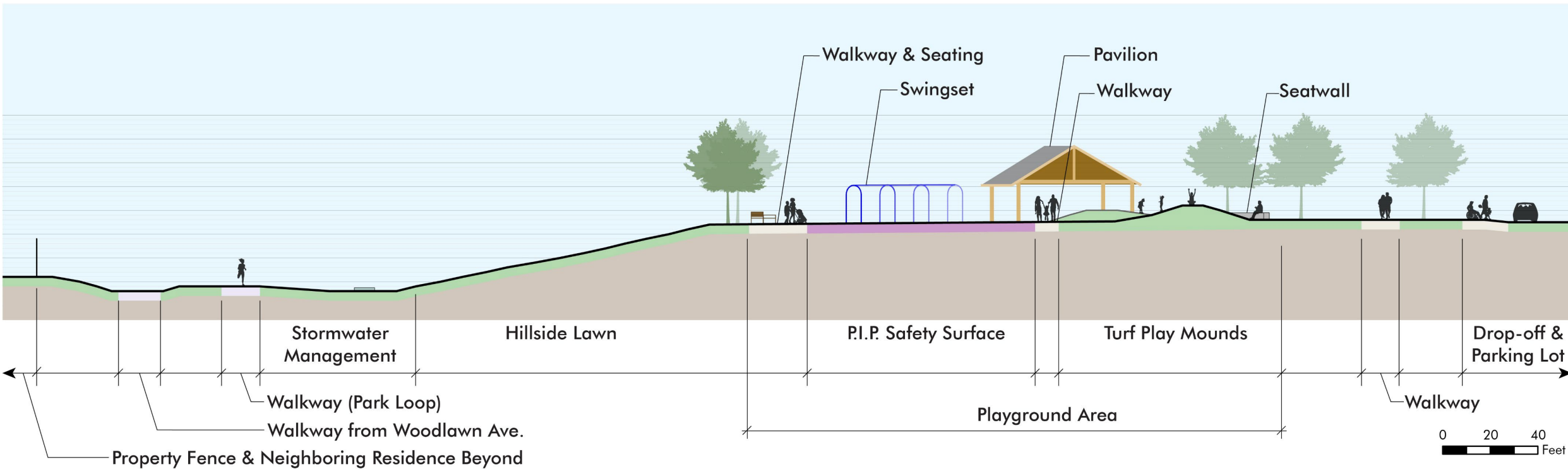
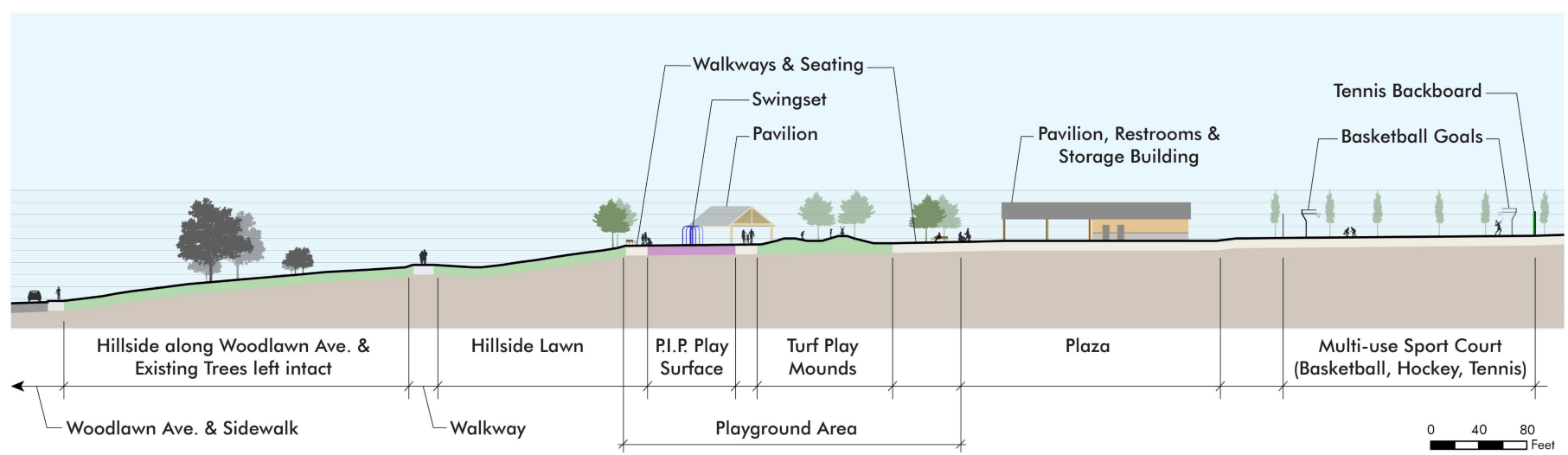
Woodlawn Park

Construction Documents

Upper Moreland Township







Structure Examples



Open Air Pavilion Park Office / Restrooms Building



Plaza Arbor

Woodlawn Park Improvements Project Timeline

- **Spring / Summer 2025** Submit Project NPDES Permit & Complete Bid Documents
- **Winter 2025/2026** Publicly Bid Construction Project
- **Winter / Spring 2026** Award Construction Contract
- **Spring-Fall 2026** Park Construction
- **Fall 2026** Completed Park Improvements

Questions & Answers

Please feel free to contact us anytime

- Simone Collins Landscape Architecture:
 - Sarah Leeper, RLA, Project Manager
 - sleeper@simonecollins.com
 - (610) 239-7601
- Katie Kollar, Director of Parks and Recreation
 - kkollar@uppermoreland.org
 - (215) 659-3100



SEAL: _____

CONSULTANT(S): _____

ISSUE DATE: 03/31/2025
DRAWN BY: MA
DESIGNED BY: SL
CHECKED BY: PS

REVISIONS:

NO. DATE REVISION

PROJECT TITLE:
Woodlawn Park CD

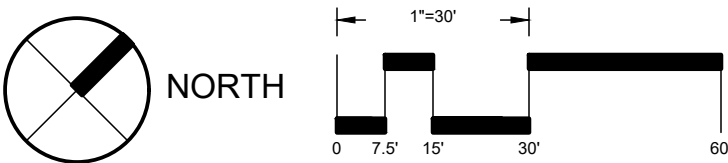
UPPER MORELAND TOWNSHIP

OWNER: _____

PROJECT NUMBER(S): _____ SOURCE: _____

24011.10 SC

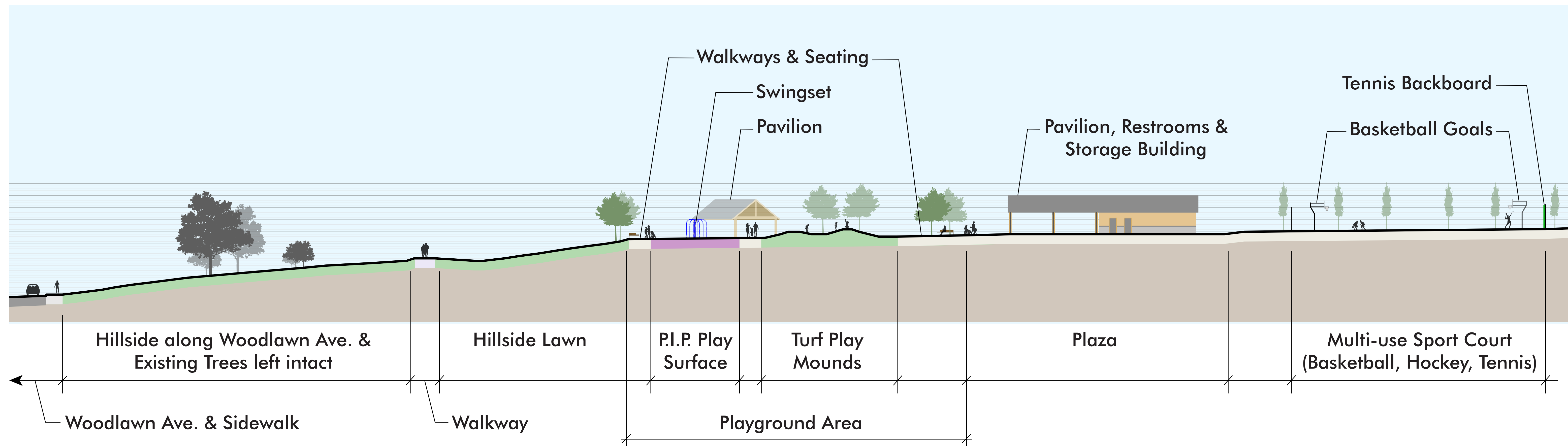
ORIENTATION: _____ DRAWING SCALE: _____



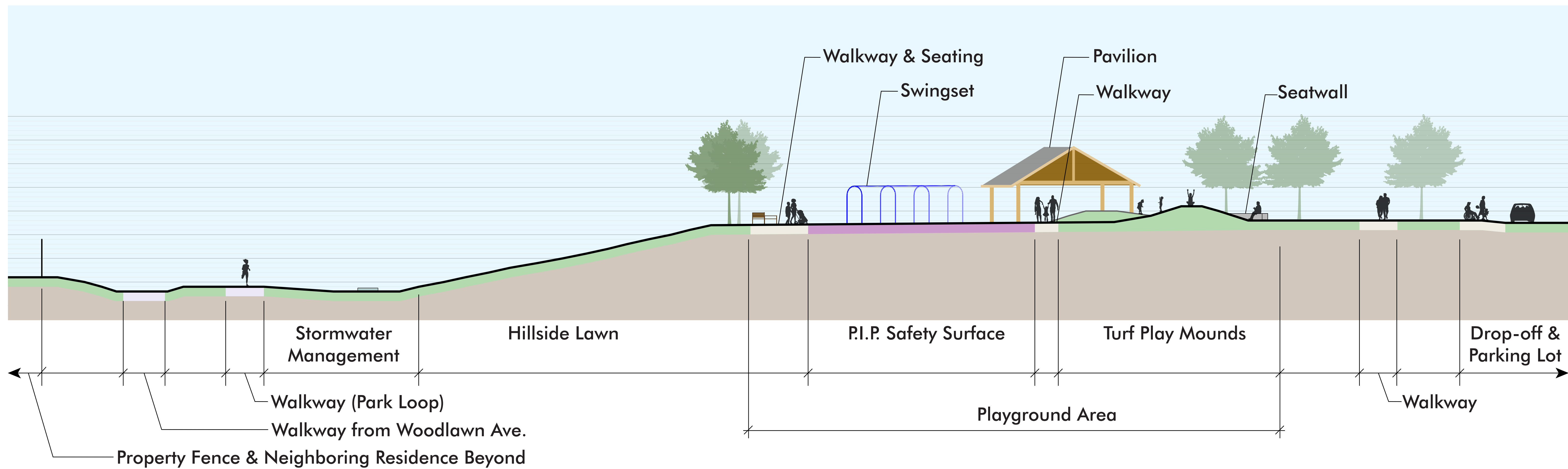
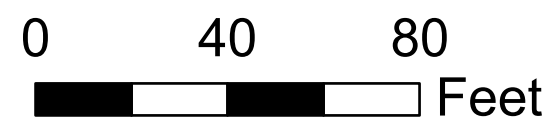
DRAWING TITLE:
**SCHEMATIC LAYOUT PLAN
FULL SITE**

SHEET NUMBER: _____

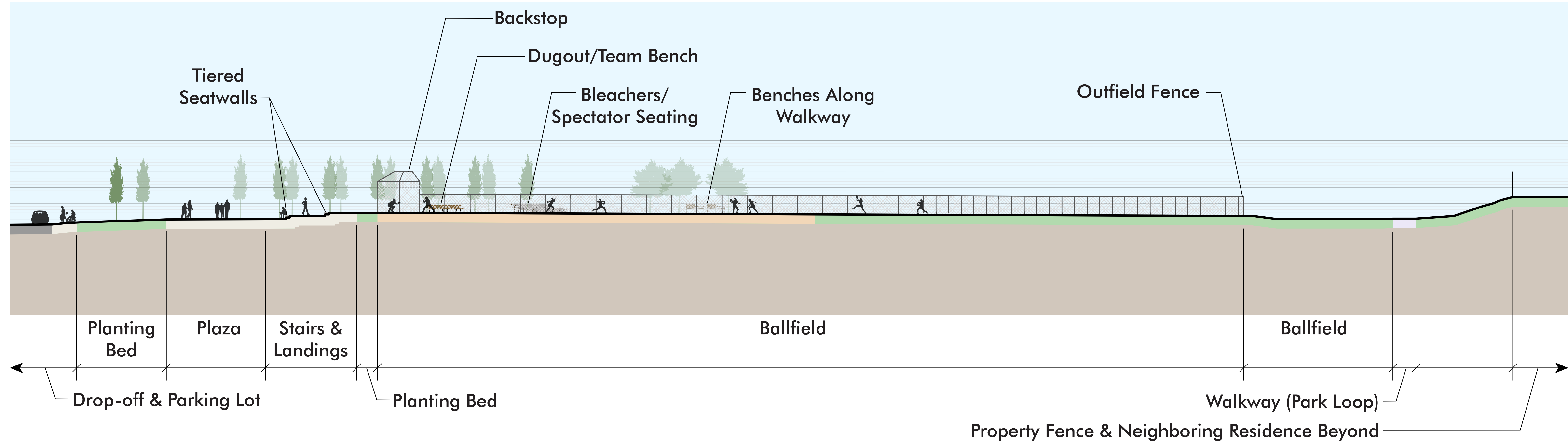
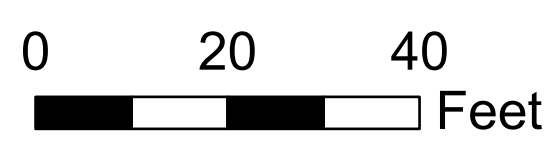
L.1



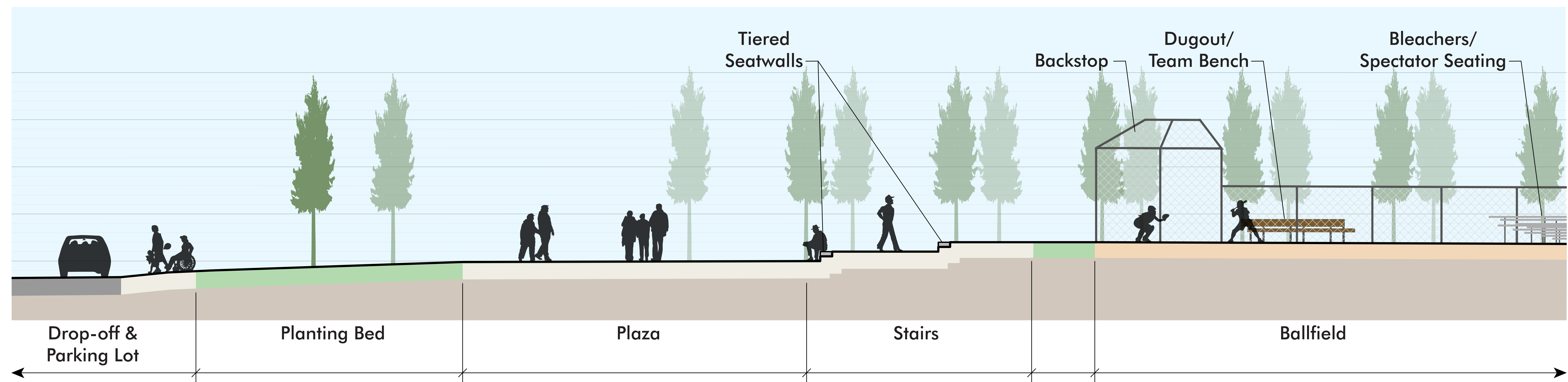
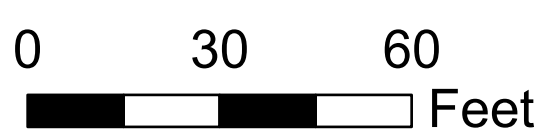
Section A-A



Section B-B



Section C-C



Section C-C: Close-up

